

Addendum Number One

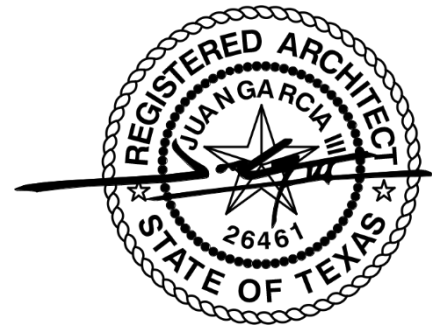
Issue Date:

12/06/20204

Project:

Lubbock County Detention Center

Loading Dock Improvements – ITB251102



The following are additions and changes to the Specifications and Drawings and shall become a part of the Contract Documents. Where items in the Specifications or Drawings are supplemented below, all original requirements shall remain in effect.

General

Item #1G: Refer to the attached Pre-Bid Sign in Sheet.

Clarifications

Item #1C: Concrete mix design at retaining wall locations shall include waterproofing admixtures as specified in section 033000 Cast-In-Place Concrete – 2.04 ADMIXTURES - N.

Specifications

Item #1S: **Section 000110 Table of Contents – Division 32 Exterior Improvements** - Include section 321313 – Concrete Paving.

Item #2S: **Section 012000 – Price and Payment Procedures** - 1.04 Modification Procedures – G. Substantiation of Cost; ADD the following sub-item (4. *When adjustments in cost include line items for insurance and bonds, provide proper documentation indicating the adjustments from the Agency.*)

Item #3S: **Section 012000 – Price and Payment Procedures** - 1.04 Modification Procedures – J. ADD this statement to the end of the sentence (*, within (7) seven days.*)
The full sentence should be read as follows.
(*Promptly revise progress schedules to reflect any change in Contract Time, revise sub schedules to adjust times for other items of work affected by the change, and resubmit, within (7) seven days.*)

Item #4S: **Section 012200 - Unit Prices – 1.02 Related Requirements;** Omit sub-items (*A., B.*) *in their entirety from the project manual.*

Item #5S: **Section 012500 - Substitution Procedures –** Omit Section 1.02 Related Requirements *in its entirety from the project manual.*

Item #6S: **Section 013000 - Administrative Requirements – 1.02 Related Requirements;** Omit sub-items (*A., B., E & Associated Sub-Items 1-2.*) *in their entirety from the project manual.*

Item #7S: **Section 013000 - Administrative Requirements – 1.04 General Administrative Requirements – B.** ADD this statement to the end of the sentence (*, through Lubbock County Procure.*)
The full sentence should be read as follows.
(*Make the following types of submittals to Architect, through Lubbock County Procure.*)

Item #8S: **Section 013000 - Administrative Requirements – 3.03 Preconstruction Meeting – D.;** OMIT the sentence “Record minutes and distribute copies within two days after meeting to participants, with two copies to Architect, Owner, participants, and those affected by decisions made.”
And replace the sentence with the following:
“Record minutes and distribute to Architect, Owner, participants, and those affected by decisions made via Lubbock County Procure System within two days after meeting.”

- Item #9S:** **Section 013000 - Administrative Requirements – 3.04 Site Mobilization Meeting – D.;**
 OMIT the sentence “Record minutes and distribute copies within two days after meeting to participants, with two copies to Architect, Owner, participants, and those affected by decisions made.”
 And replace the sentence with the following:
“Record minutes and distribute to Architect, Owner, participants, and those affected by decisions made via Lubbock County Procure System within two days after meeting.”
- Item #10S:** **Section 013216- Construction Progress Schedule 1.02 Related Requirements;** Omit sub-items (G,H,I.) in their entirety from the project manual.
- Item #11S:** **Section 013216- Construction Progress Schedule 3.06 Distribution of Schedule;** Omit sub-item A. description and replace it with the following:
“Distribute copies of updated schedules via County Procure System to subcontractors, suppliers, Architect, Owner, and other concerned parties.”
- Item #12S:** **Section 013000 - Administrative Requirements – 3.05 Progress Meeting – E.;**
 OMIT the sentence “Record minutes and distribute copies within two days after meeting to participants, with two copies to Architect, Owner, participants, and those affected by decisions made.”
 And replace the sentence with the following:
“Record minutes and distribute to Architect, Owner, participants, and those affected by decisions made via Lubbock County Procure System within two days after meeting.”
- Item #13S:** **Section 013000 - Administrative Requirements – 3.06 Construction Progress Schedule – D.**
 ADD this statement to the end of the sentence (, through Lubbock County Procure.)
 The full sentence should be read as follows.
(Within 10 days after joint review, submit complete schedule, through Lubbock County Procure.)
- Item #14S:** **Section 014000 – Quality Requirements – 1.02 Related Requirements;** Omit sub-items (A., B., C.) in their entirety from the project manual.
- Item #15S:** **Section 015000 – Temporary Facilities and Controls – 1.02 Related Requirements;** Omit sub-items (A., B.) in their entirety from the project manual.
- Item #16S:** **Section 015000 – Temporary Facilities and Controls – 1.09 Waste Removal;** Omit sub-items (A.) in its entirety from the project manual.
- Item #17S:** **Section 016000 – Product Requirements – 1.02 Related Requirements;** Omit sub-items (C., D.) in its entirety from the project manual.
- Item #18S:** **Section 016000 – Product Requirements – 2.02 New Products;** Omit sub-items (C. and associated sub-items 1-2.) in its entirety from the project manual.
- Item #19S:** **Section 017000 – Execution and Closeout Requirements – 1.02 Related Requirements;** Omit sub-items (D.) in its entirety from the project manual.
- Item #20S:** **Section 031000 – Concrete Forming and Accessories – 1.02 Related Requirements;** Omit sub-items (B.- F.) in its entirety from the project manual.
- Item #21S:** **Section 031000 – Concrete Forming and Accessories – 2.04 Formwork Accessories;** Replace the sub-items (A.) with the following verbiage. *(Form Ties: Removable type, galvanized metal, fixed length, cone type, with waterproofing washer, 1-inch back break dimension, (25.4mm back break dimension,) free of defects that could leave holes larger than 1 inch (25 mm) in concrete surface.)*
- Item #22S:** **Section 031000 – Concrete Forming and Accessories – 2.04 Formwork Accessories;** Omit Sub-Item (D.) in its entirety from the project manual.
- Item #23S:** **Section 032000 – Concrete Reinforcing – 1.02 Related Requirements;** Omit sub-items (B.) in its entirety from the project manual.
- Item #24S:** **Section 033000 – Cast-In-Place Concrete – 1.02 Related Requirements;** Omit sub-items (C. – F.) in its entirety from the project manual.

Item #25S: Section 033000 – Cast-In-Place Concrete – Part 2 Products; Include the sub-section listed below following sub-section 2.06 Bonding and Jointing Products.

2.07 READY MIXED CONCRETE

- A. Ready mixed concrete shall be measured, mixed and delivered according to ASTM C94, except as modified herein.
- B. Prepare design mixtures for each class of concrete on the basis of laboratory trial mixtures or field test data, or both in accordance with ACI 301. Design mixtures shall meet the requirements listed in Table 033000-1
- C. Addition of water is permitted for batches of material with insufficient slump at the job site but is limited to the lesser of; 1 gallon per cubic yard or the quantity of water indicated on the delivery ticket such that the mixing water content on approved mix design is not exceeded.
- D. Ready Mixed Concrete Delivery Tickets:
 - 1. Furnish 2 delivery tickets with each batch of concrete before unloading at site; 1 for Contractor and 1 for Engineer on which is printed, stamped or written the following information:
 - i Name of ready mix batch plant
 - ii Serial number of ticket
 - iii Date and truck number
 - iv Name of Contractor
 - v Job name and location
 - vi Specific class or designation of concrete
 - vii Amount of concrete (cubic yards)
 - viii Time loaded or of first mixing of cement and aggregates
 - ix Type, name and amount of admixture
 - x Type, brand and amount of cement
 - xi Total water content by producer (or W/C ratio)
 - xii Maximum size of aggregate
 - xiii Weights of fine and coarse aggregates
- E. Mix Proportioning:
 - 1. Minimum amount of cementitious material identified in the following mix proportions shall apply for mixes for which field experience or trial mixture information required is not provided.

Table 033000-1

CLASS	28-DAY STRENGTH (PSI)	SLUMP RANGE (IN)	AGGREGATE SIZE (IN)	W/C RATIO (BY WT.)	AIR ENTRAINMENT %	USAGE
A	4,000	3-5	3/4	0.45 Max.	None	All footings & interior slab on grade (2)
C	4,000	3-5	3/4	0.50 Max.	5.0	Exterior slab on grade, Retaining Walls. (1) (3)
F	3,500	1-4	3/4	0.62 Max.	4.5	Electrical encasement, pipe encasement, miscellaneous scheduled concrete work (1) (3)

Notes:

- (1) Air entrained concrete: Use for exterior walls, exterior slabs, walks, platforms, ramps, steps and other concrete exposed to freezing and thawing.
- (2) A maximum of 50 percent total replacement of Portland cement with GGBFS (Ground Granulated Blast-Furnace Slag) and fly ash at a 1:1 ratio; up to 350 pounds, with a maximum 25 percent fly ash. If fly ash is used alone, limit maximum replacement to 25 percent.
- (3) A maximum of 30 percent total replacement of Portland cement with GGBFS (Ground Granulated Blast-Furnace Slag) and fly ash at a 1:1 ratio where freeze-thaw durability and exposure to deicers is likely; up to 350 pounds, with a maximum 25 percent fly ash. If fly ash is used alone, limit maximum replacement to 25 percent.

Item #26S: Section 033000 – Cast-In-Place Concrete – 3.06 Concrete Finishing; Omit Sub Item (F.) in its entirety.

Item #27S: Section 079200 – Joint Sealants – Omit Section 1.02 Related Requirements *its entirety from the project manual.*

Drawings

Item #1D: Replace Drawings Sheet A-101 - ENLARGED SITE PLAN & DETAIL DRAWINGS with attached revised sheet dated 12.05.2024.

**END OF ADDENDUM ONE
TOTAL PAGES 5**

GENERAL SITE PLAN NOTES

- ALL WORK SHALL BE IN ACCORDANCE WITH APPLICABLE CODES, STANDARDS, AND PROJECT SPECIFICATIONS. VERIFY ALL DIMENSIONS AND SITE CONDITIONS IN THE FIELD PRIOR TO COMMENCING WORK.
- SITE DEVELOPMENT SHALL INCLUDE ALL GRADING, DRAINAGE, AND LANDSCAPING AS INDICATED ON THE SITE PLAN.
- CONTRACTOR SHALL CONFIRM ALL EXISTING UTILITIES AND SITE CONDITIONS BEFORE WORK BEGINS.
- OBTAIN ALL NECESSARY PERMITS AND APPROVALS FROM LOCAL AUTHORITIES PRIOR TO COMMENCING CONSTRUCTION.
- IMPLEMENT EROSION CONTROL MEASURES AS REQUIRED BY LOCAL REGULATIONS AND PROJECT SPECIFICATIONS. MAINTAIN EROSION CONTROL DEVICES THROUGHOUT THE DURATION OF THE PROJECT.
- ALL SITE ELEMENTS SHALL BE DESIGNED AND CONSTRUCTED TO COMPLY WITH THE AMERICANS WITH DISABILITIES ACT (ADA) REQUIREMENTS.
- PROVIDE ACCESSIBLE ROUTES TO ALL BUILDINGS AND FACILITIES AS INDICATED.
- ANY DAMAGED UTILITIES SHALL BE REPAIRED IMMEDIATELY AT NO ADDITIONAL COST TO THE OWNER.
- PAVING MATERIALS AND INSTALLATION METHODS SHALL COMPLY WITH THE SPECIFICATIONS AND DETAILS SHOWN ON THE PLANS. ALL SURFACES SHALL BE FINISHED AS INDICATED AND PROTECTED FROM DAMAGE DURING CONSTRUCTION.
- NOTIFY THE ARCHITECT/ENGINEER PRIOR TO ANY REQUIRED INSPECTIONS.

LEGEND

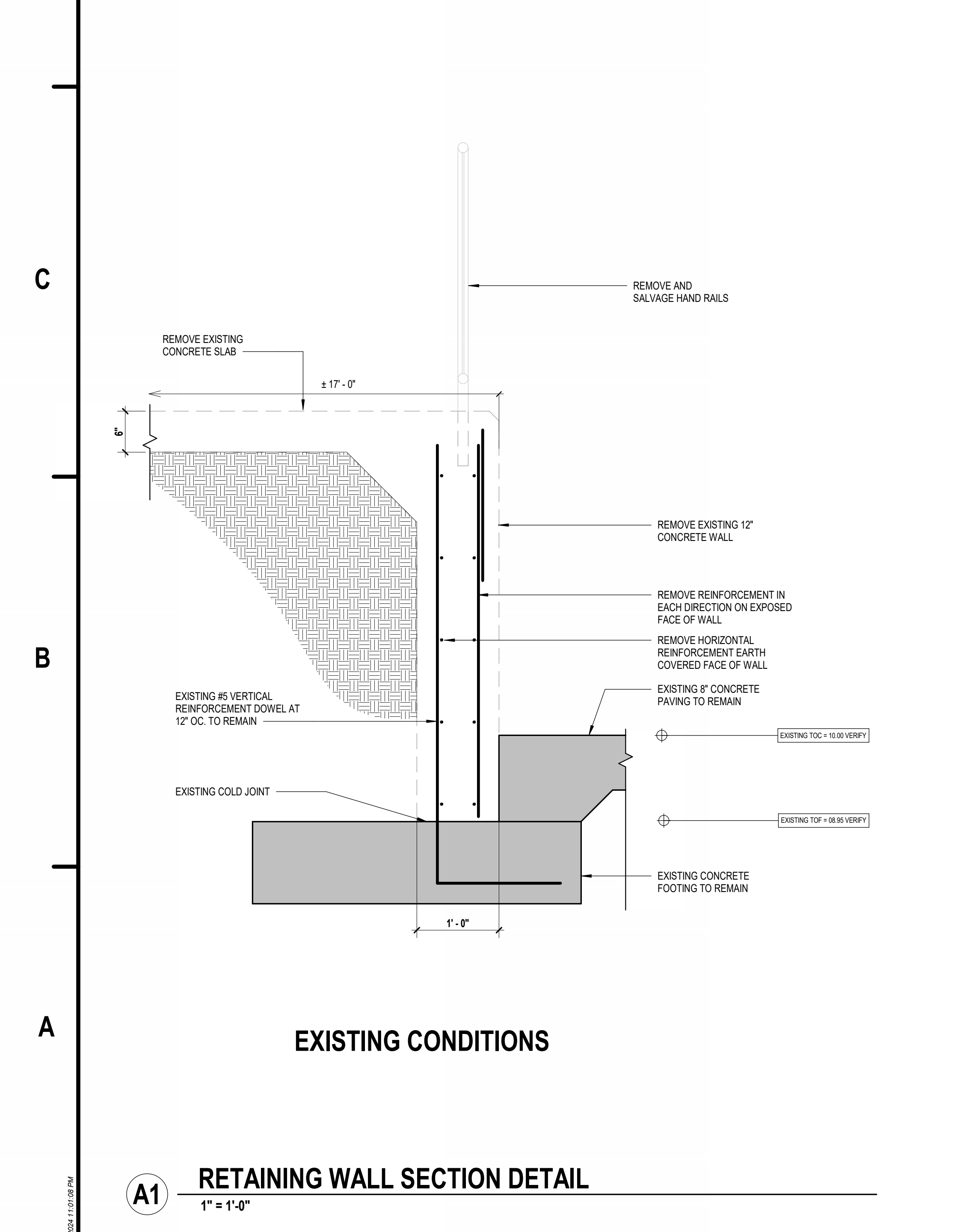
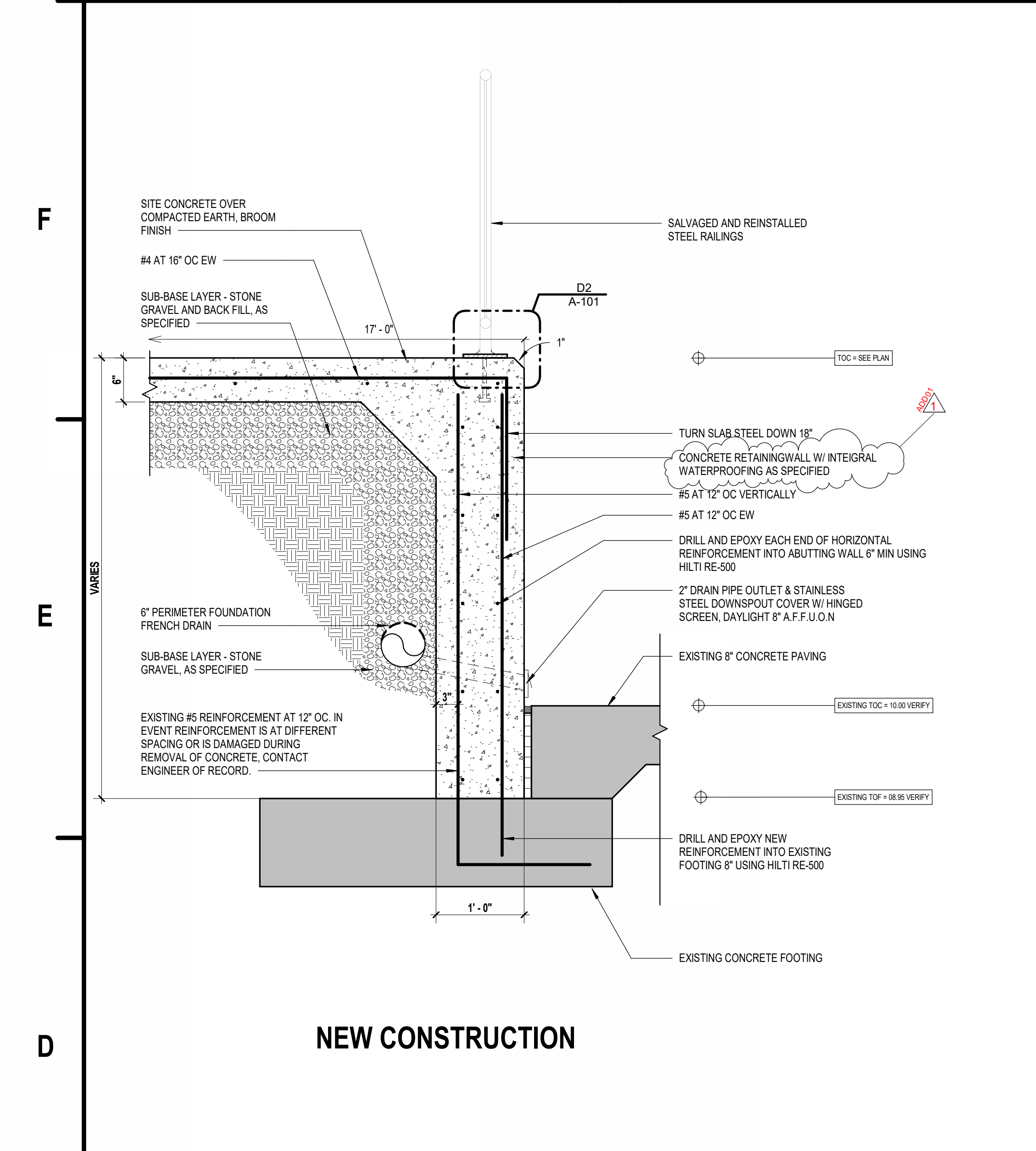
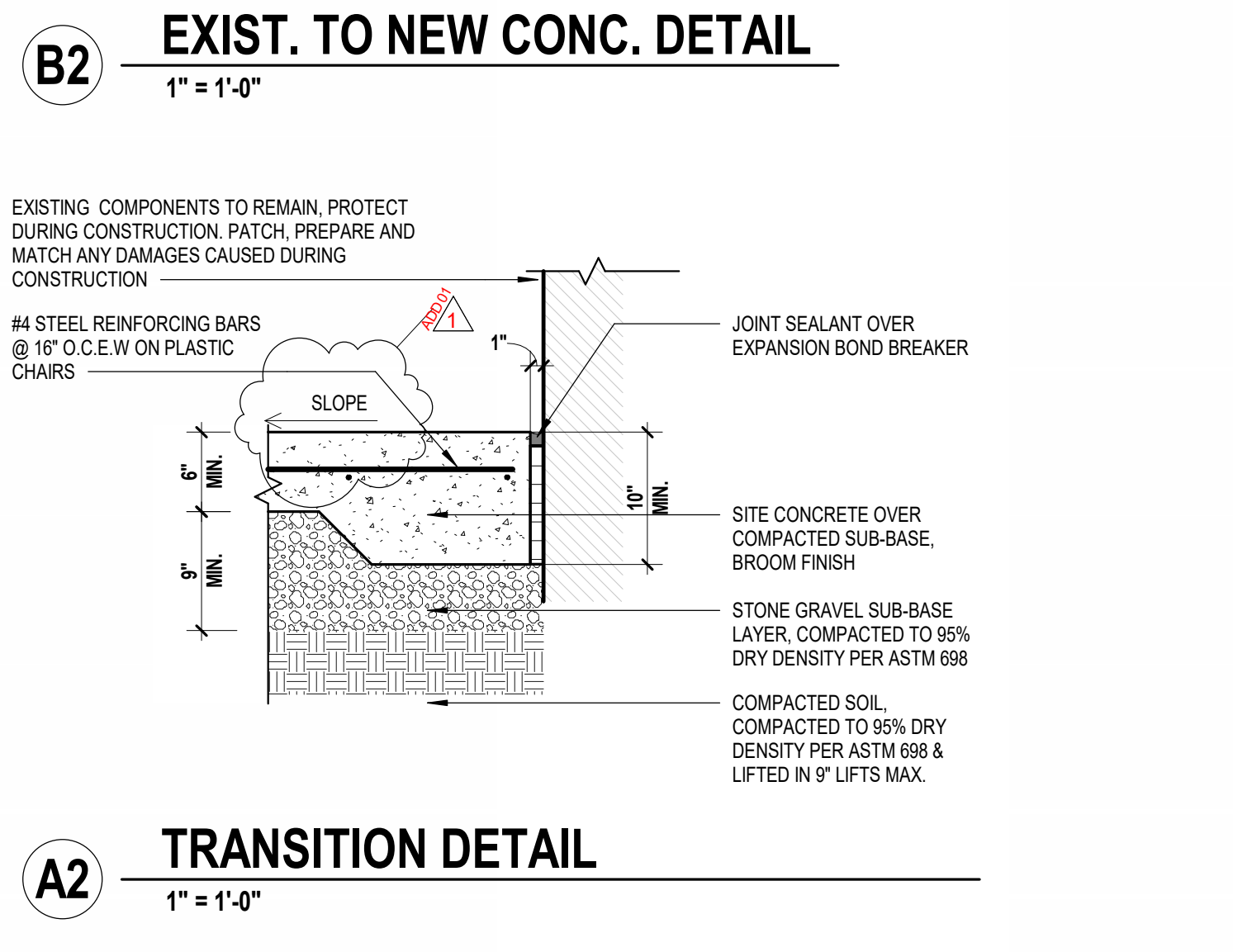
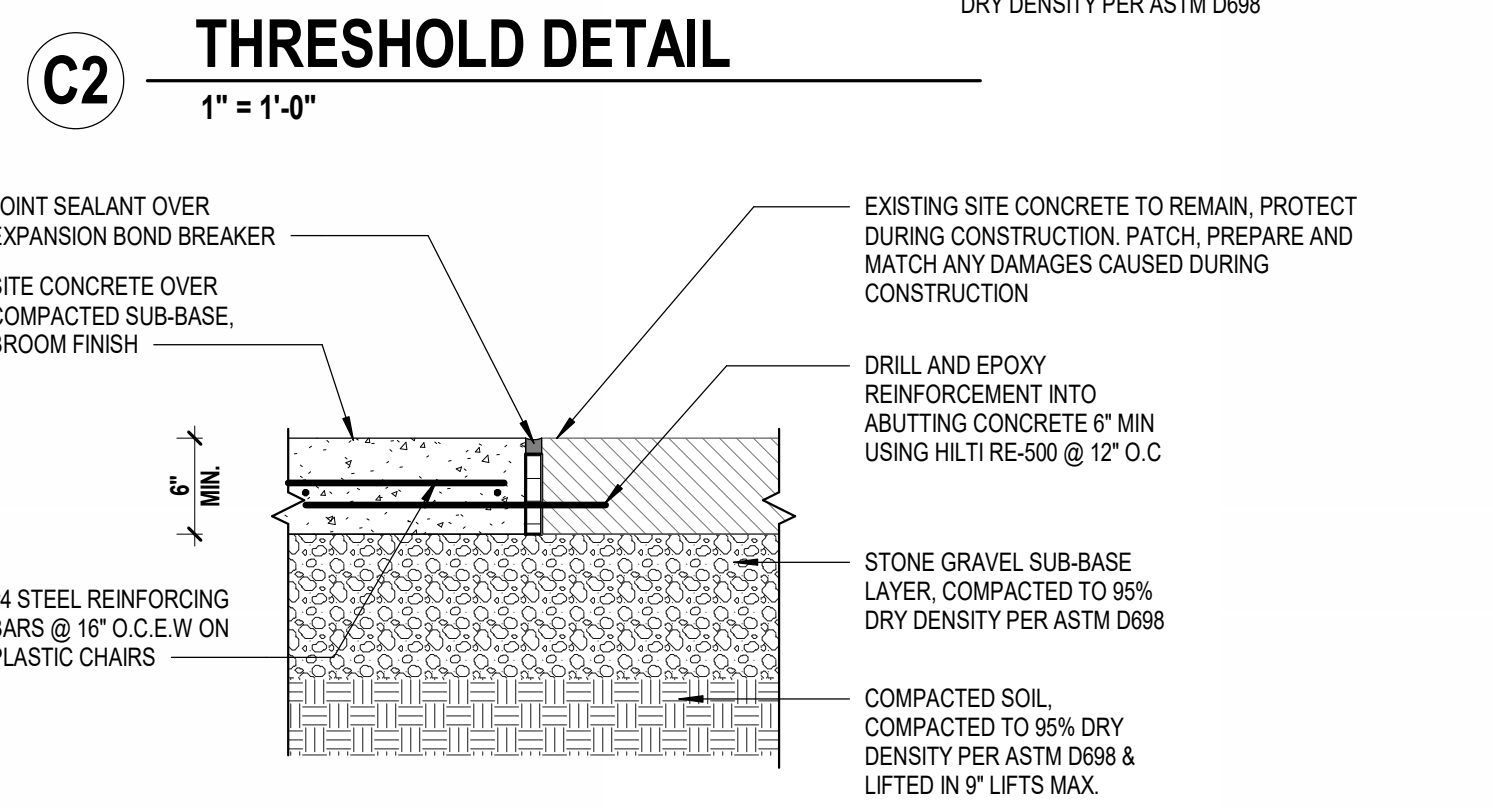
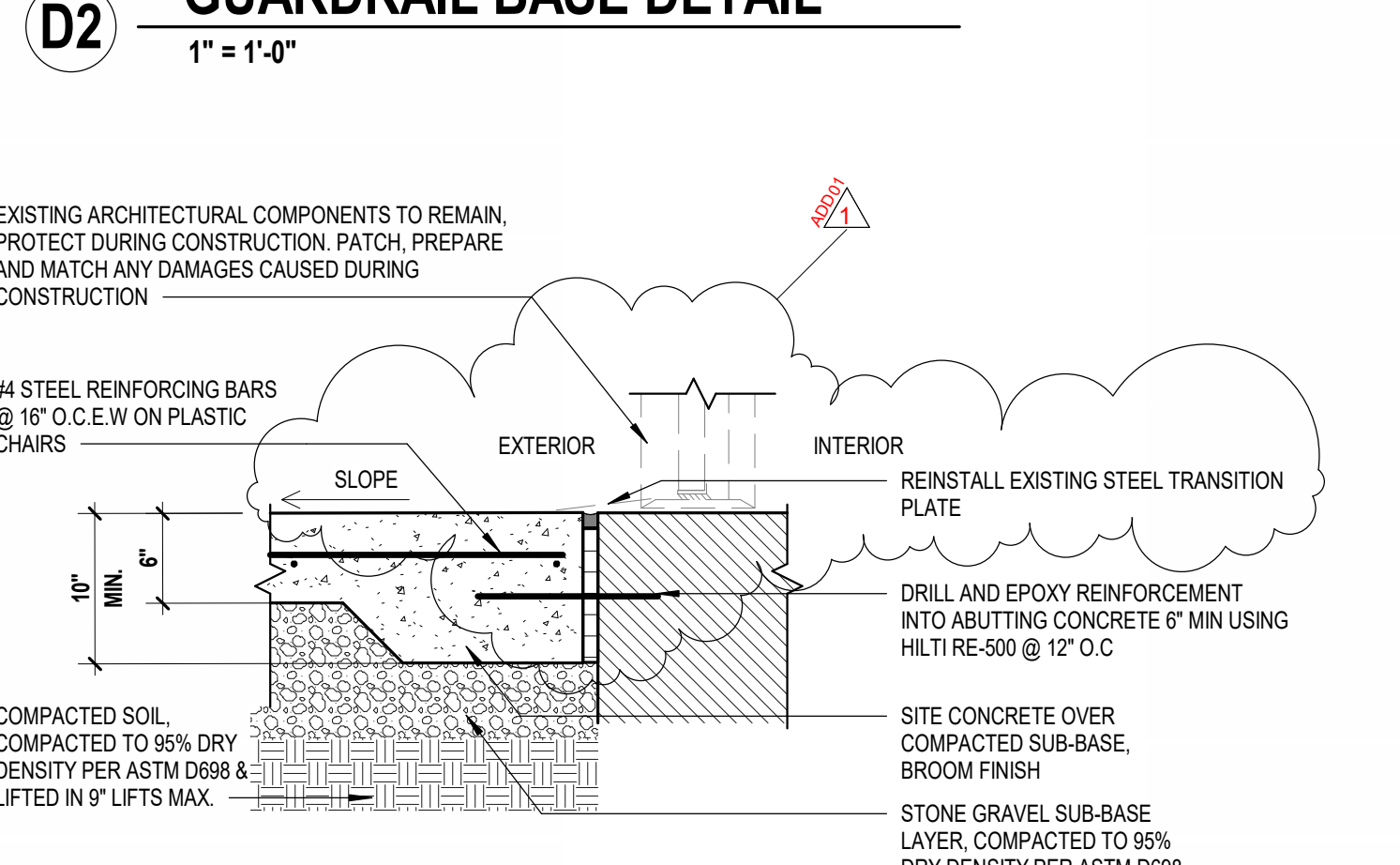
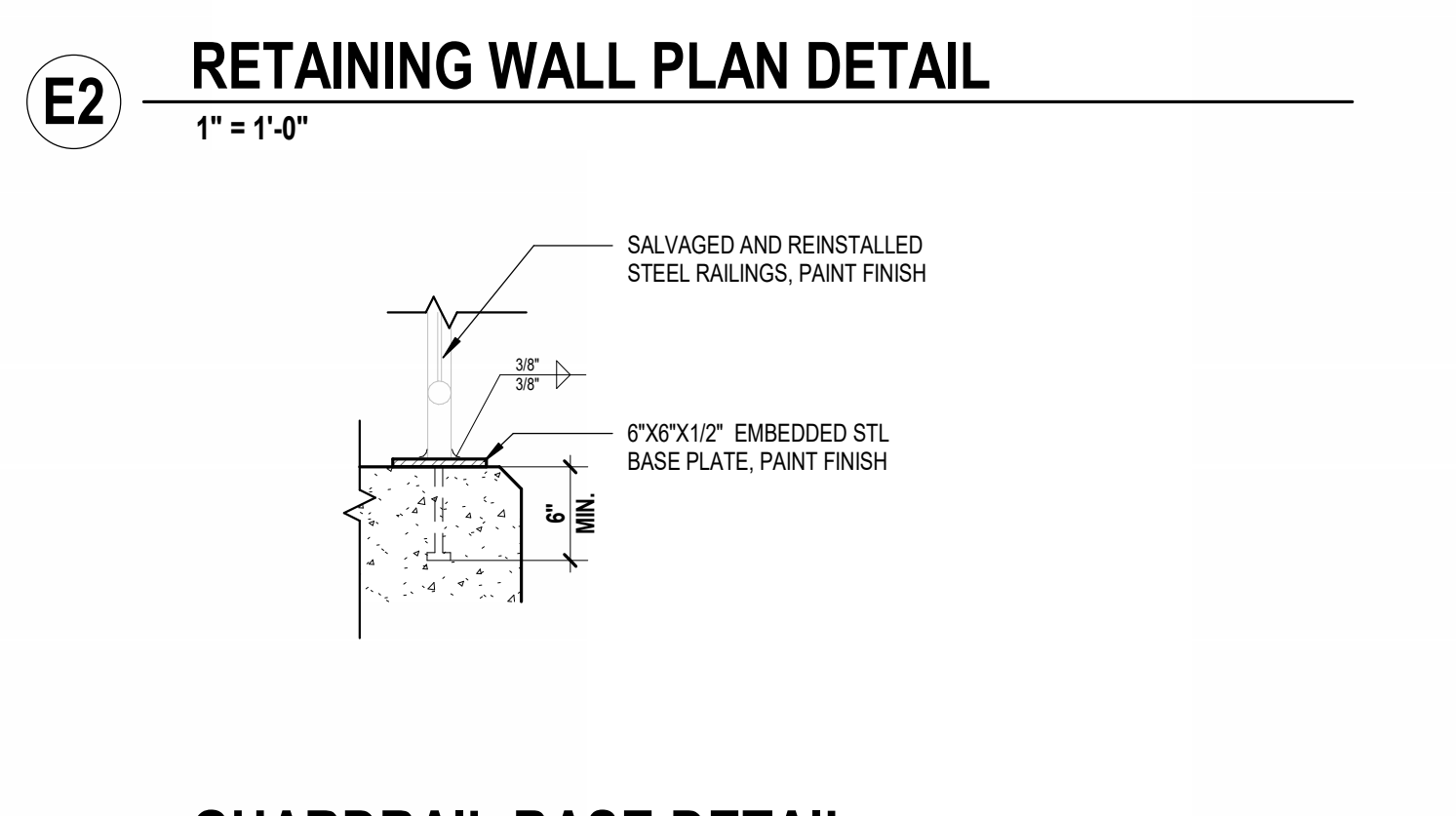
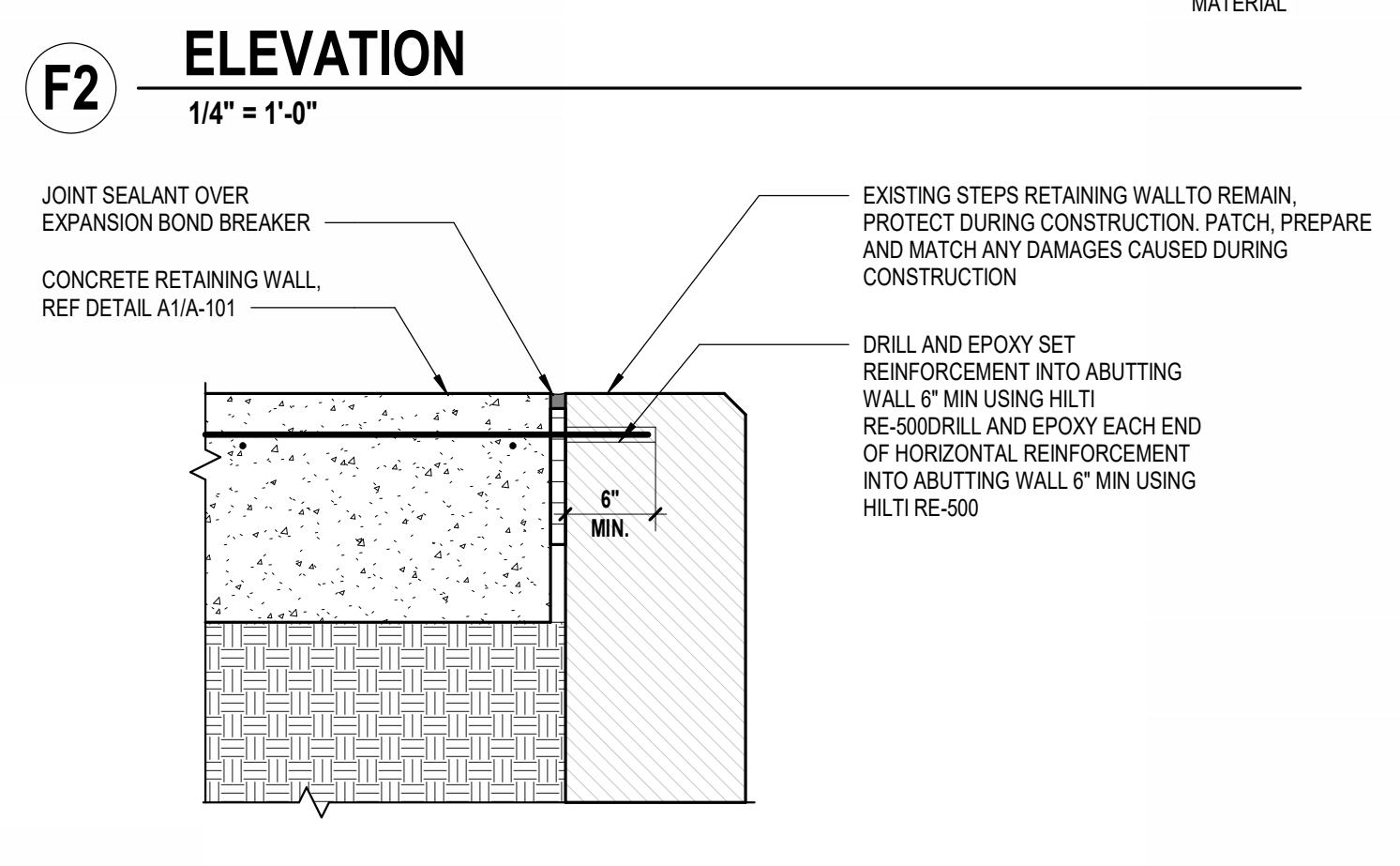
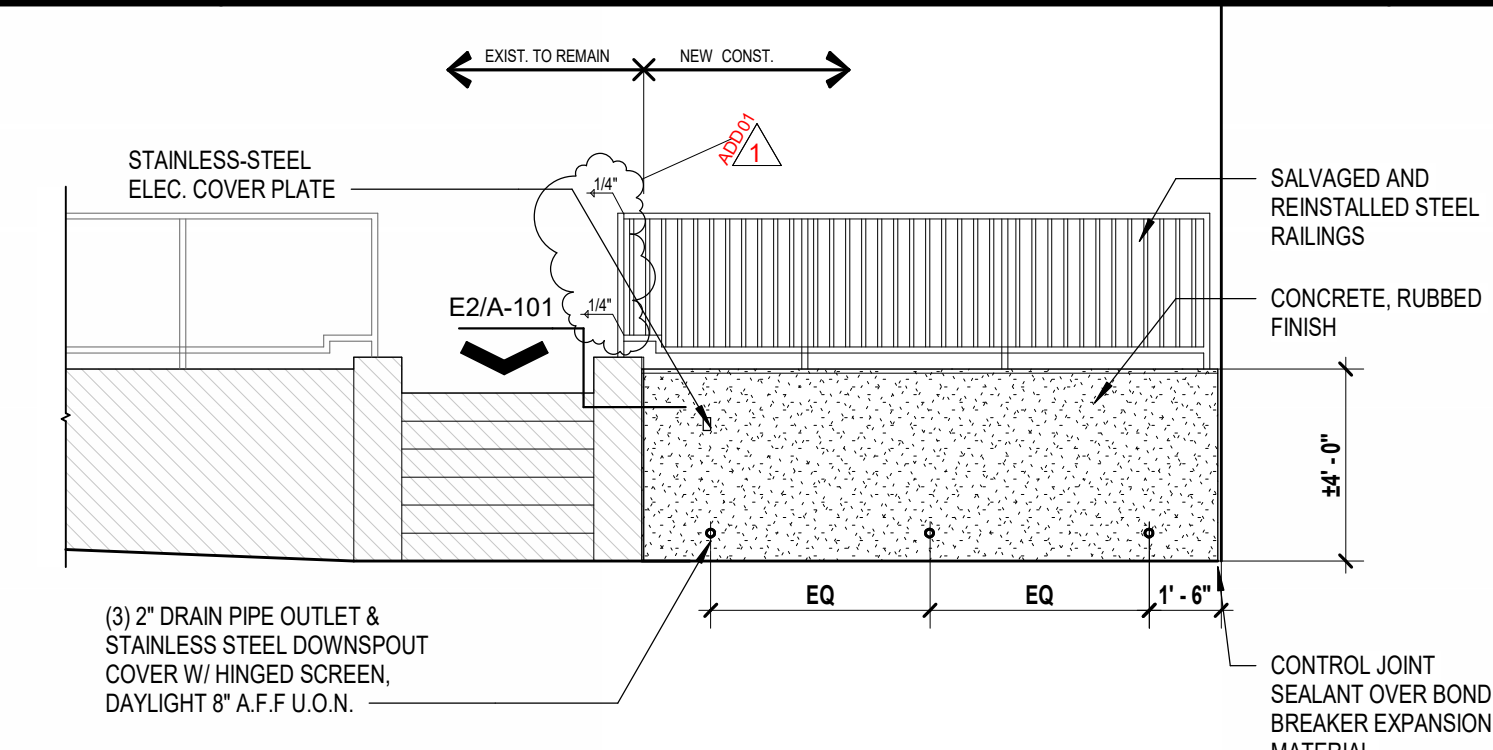
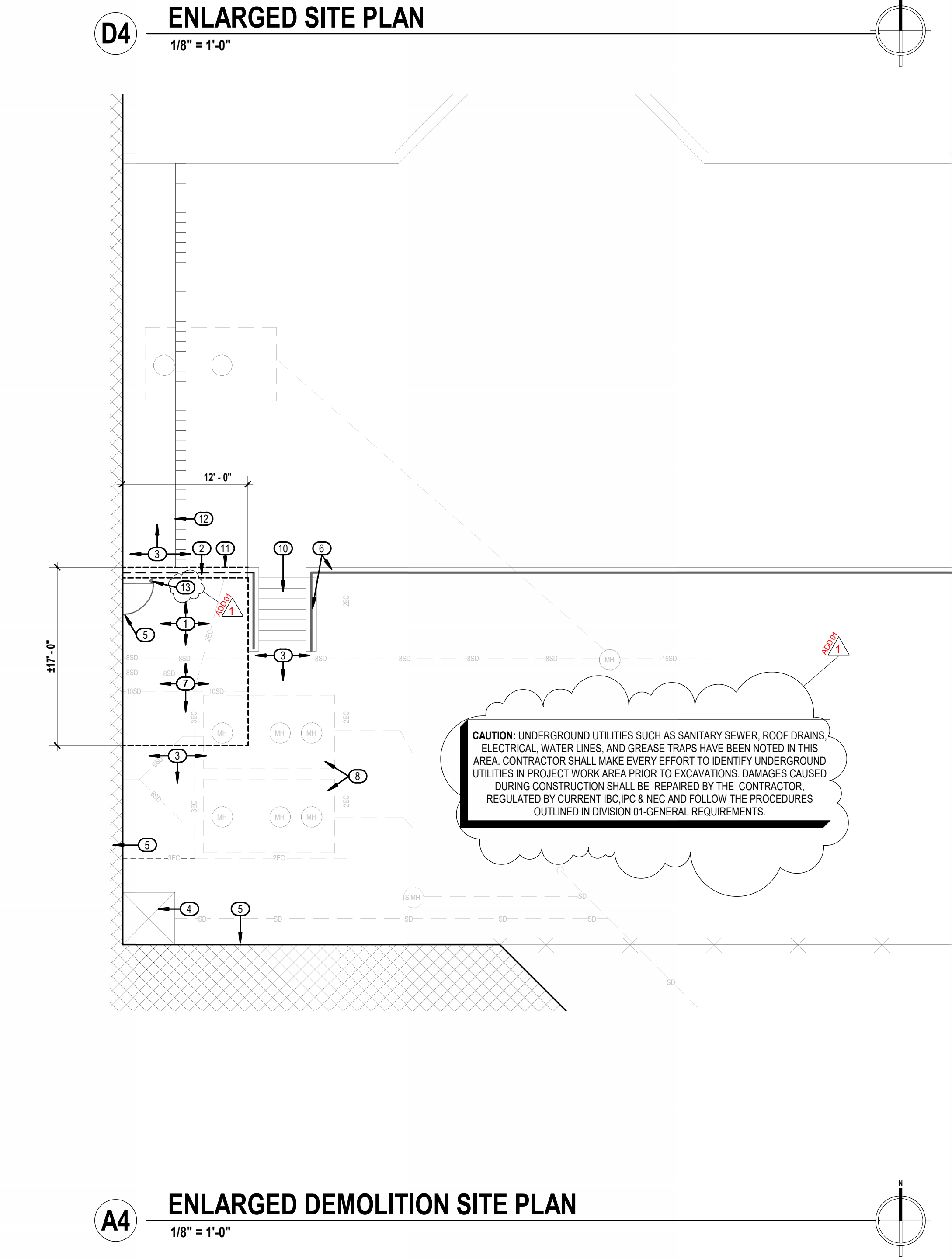
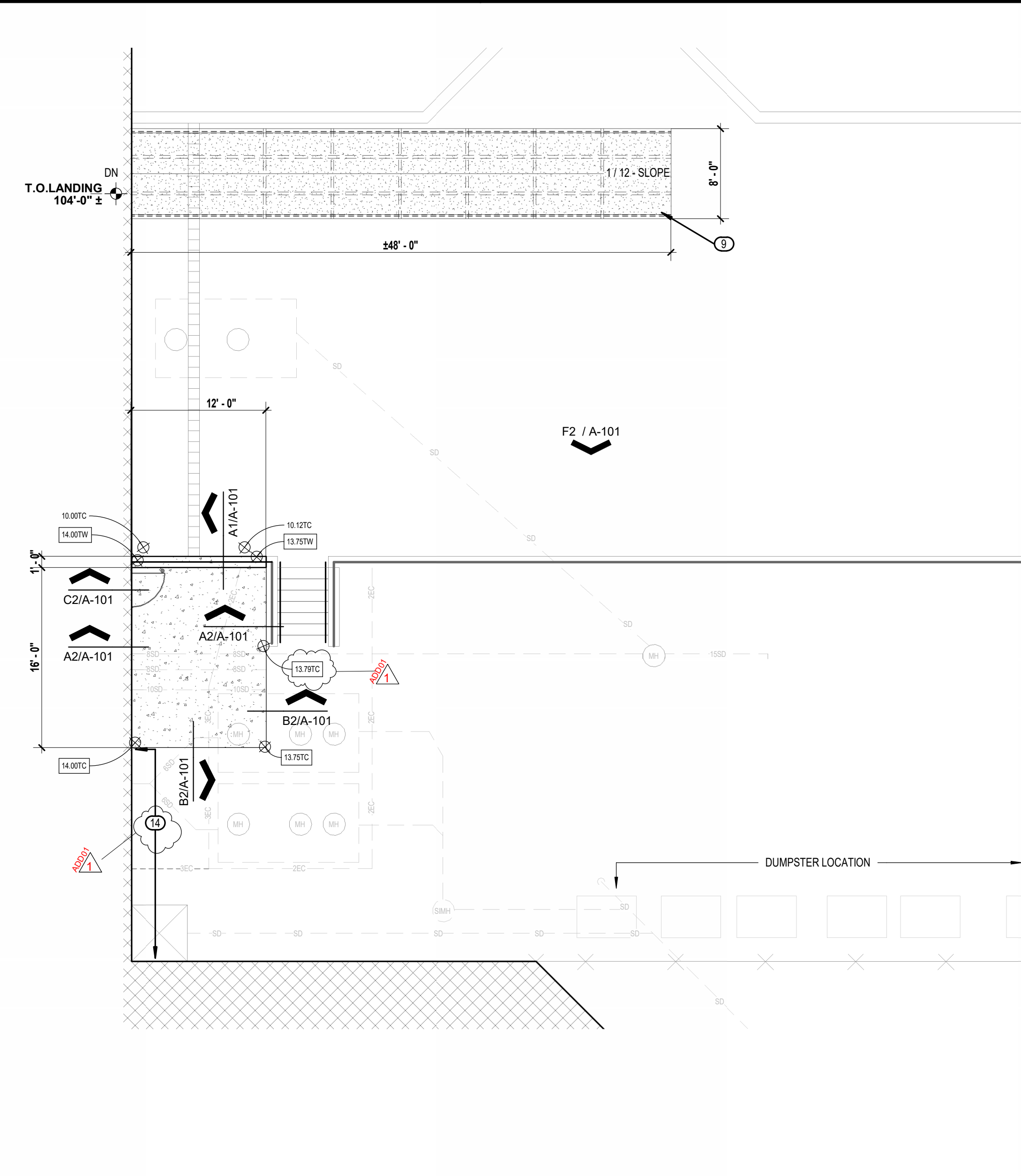
- NEW CONCRETE
- EXISTING BUILDING
- EXISTING SITE WORK TO REMAIN
- EXISTING SITE WORK TO BE REMOVED
- EXISTING GRADE
- NEW GRADE
- EXISTING UNDERGROUND (#) SANITARY SEWER REFER PLAN FOR PIPE SIZE
- EXISTING UNDERGROUND 2" ELECTRICAL CONDUIT
- EXISTING MANHOLE

KEYED NOTES

- SAWOUT & REMOVE PORTION OF EXISTING SITE CONCRETE, ASSOCIATED GRAVEL BASE & COMPACTED FILL AS REQUIRED.
- REMOVE EXISTING STEEL PIPE RAILING, SALVAGE TO GENERAL CONTRACTOR FOR REINSTALL ON A LATER SEQUENCE OF THIS PROJECT.
- EXISTING SITE CONCRETE TO REMAIN, PROTECT FROM DAMAGE DURING CONSTRUCTION. PATCH, PREPARE AND MATCH ANY DAMAGES CAUSED DURING CONSTRUCTION. REFER SPECIFICATIONS.
- EXISTING CAN WASH BASIN AND DRAIN SHALL REMAIN FUNCTIONAL THROUGHOUT THE PROJECT DURATION. PROTECT FROM DAMAGE DURING CONSTRUCTION. PATCH, PREPARE AND MATCH ANY DAMAGES CAUSED DURING CONSTRUCTION. REFER SPECIFICATIONS.
- EXISTING ARCHITECTURAL COMPONENTS TO REMAIN, PROTECT DURING CONSTRUCTION. PATCH, PREPARE AND MATCH ANY DAMAGES CAUSED DURING CONSTRUCTION.
- EXISTING STRUCTURAL RETAINING WALL TO REMAIN, PROTECT FROM DAMAGE DURING CONSTRUCTION. PATCH, PREPARE AND MATCH ANY DAMAGES CAUSED DURING CONSTRUCTION. REFER SPECIFICATIONS.
- CAUTION: UNDERGROUND UTILITIES SUCH AS SANITARY SEWER, ROOF DRAINS, ELECTRICAL, WATER LINES, AND GREASE TRAPS HAVE BEEN IDENTIFIED IN THIS AREA. CONTRACTOR SHALL PROCEED WITH CAUTION.
- BELOW GRADE GREASE INTERCEPTORS, PROTECT PRECAST UNIT, PLUMBING LINES AND ASSOCIATED COMPONENT, DURING CONSTRUCTION.
- PRE-FABRICATED TEMPORARY OSHA COMPLIANT ACCESS RAMP, CPO1, SHALL BE INSTALLED PRIOR TO DEMOLITION AND REMOVED FROM SITE AT SUBSTANTIAL COMPLETION.
- EXISTING CONCRETE STEPS TO REMAIN, PROTECT FROM DAMAGE DURING CONSTRUCTION. PATCH, PREPARE AND MATCH ANY DAMAGES CAUSED DURING CONSTRUCTION. REFER SPECIFICATIONS.
- COMPLETELY REMOVE EXISTING ELECTRICAL (4-BOX), ASSOCIATED ELECTRICAL WIRING AND CONDUIT. ENSURE WIRING IS SAFELY DISCONNECTED AND PROPERLY TERMINATED AT THE ELECTRICAL PANEL. EXISTING WIRING THAT NEEDS TO BE EXTENDED OR REROUTED DUE TO THE REMOVAL OF THE 4-BOX SHALL BE DONE IN COMPLIANCE WITH THE NATIONAL ELECTRICAL CODE.
- EXISTING TRENCH DRAIN & STEEL GRATE TO REMAIN AND BE PROTECTED.
- EXISTING FLOOR STOP TO BE REMOVED, SALVAGED TO THE GENERAL CONTRACTOR AND REINSTALLED AT A LATER SEQUENCE OF THIS PROJECT.
- JOINT SEALANT OVER EXPANSION BOND BREAKER

ACCESSIBLE ROUTE REQ.

- ACCESSIBLE PARKING SPACES AND UNLOADING ZONES SHALL NOT SLOPE MORE THAN 1:48 (2.08%) IN ANY DIRECTION.
- ACCESSIBLE ROUTES SHALL NOT SLOPE MORE THAN 1:20 (5%) IN THE DIRECTION OF TRAVEL OR 1:48 (2.08%) PERPENDICULAR TO THE DIRECTION OF TRAVEL.
- WHERE ACCESSIBLE ROUTES CHANGE DIRECTION, THE LANDING AREA SHALL NOT SLOPE MORE THAN 1:48 (2.08%) IN ANY DIRECTION.
- ACCESSIBLE ROUTES SHALL NOT BE LESS THAN 3'-0" WIDE PERPENDICULAR TO THE DIRECTION OF TRAVEL.
- SURFACES ALONG THE ACCESSIBLE ROUTE SHALL BE SMOOTH WITH NO CHANGES IN LEVEL EXCEEDING 1/4". TRANSITIONS BETWEEN MATERIALS ALONG AN ACCESSIBLE ROUTE SHALL BE FLUSH.
- REFER TO SECTION 4 IN THE LATEST EDITION OF THE TEXAS ACCESSIBILITY STANDARDS FOR FURTHER REQUIREMENTS FOR ACCESSIBLE ROUTES.



A1 RETAINING WALL SECTION DETAIL
1" = 1'-0"

1 2 3 4 5 6

F
E
D
C
B
A

1 2 3 4 5 6